

FULL LIFE AHEAD FOUNDATION OF HOPE

HELPING OTHER PEOPLE ENVISION

Items Provided:

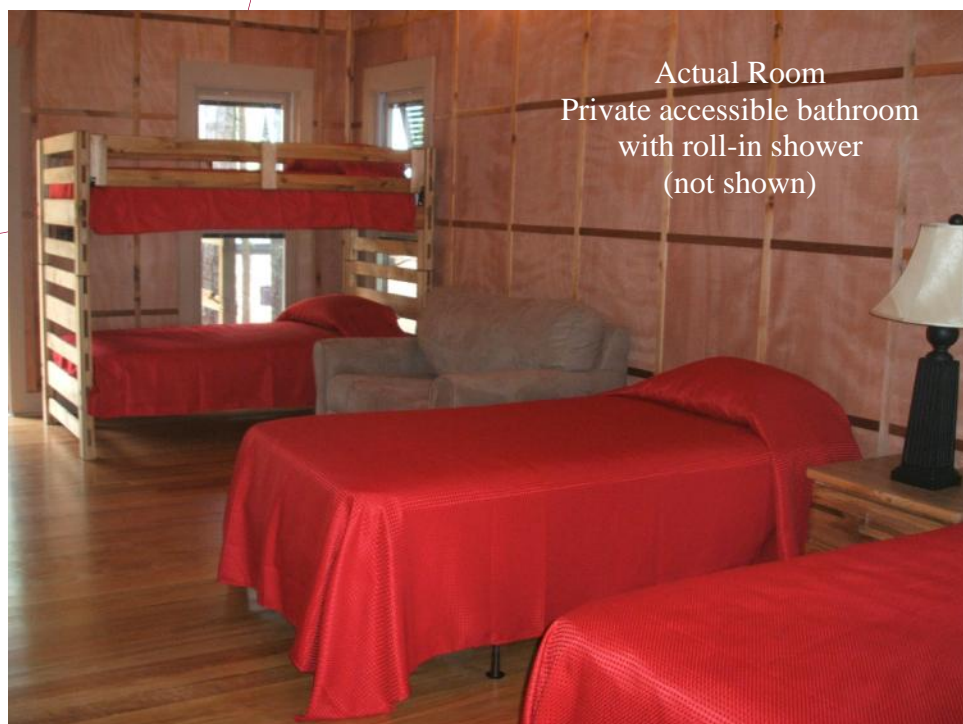
- Sheets - 1 set per person
- Towels—1 set per person
- Blanket—1 per person
- Pillow—1 per person

Items to Bring:

Anything you need to make yourself comfortable in a camp setting.

Example:

- Flash Light
- Jacket
- Extra Blankets
- Extra shoes
- Umbrella
- Soap
- Shampoo
- Blow Dryer



Actual Room
Private accessible bathroom
with roll-in shower
(not shown)

Directions

FULL LIFE AHEAD
FOUNDATION

Weekend Contact Info:

Judy Barclay: 205-222-1969 (c)

Children's Harbor
1 Our Children's Highway
Children's Harbor, Al
Tammy Jackson (on campus)

256-749-4541

From Birmingham, Alabama:

Take Highway 280 East to Alexander City, Alabama. Turn right onto Highway 63 South for about 15 miles. The Children's Harbor Lake Martin Campus is on the left as you cross the Kowaliga Bridge.

From Columbus, Georgia:

Take Highway 280 West to Alexander City, Alabama. Turn left onto Highway 63 South for about 15 miles. The Children's Harbor Lake Martin Campus is on the left as you cross the Kowaliga Bridge.

From Montgomery, Alabama:

Take Highway 231 North to Wetumpka. Take Highway 170 until it dead-ends into Highway 63. Take a left onto Highway 63 North and go approximately 12 miles to the Children's Harbor Lake Martin Campus which will be on the right just before you get to the Kowaliga Bridge.